

SNAPConnect® Devices



SNAPConnect® Devices

Installation Efficiency

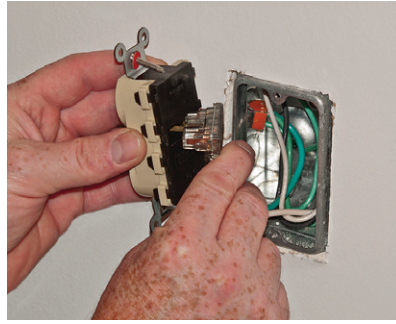
Labor Savings

Save up to 5 Minutes



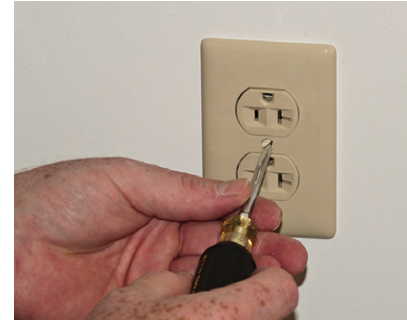
Save 1 Minute

Rough-in the SNAPConnect® terminal instead of pigtails.



Save Over 3 Minutes

Remove protective packaging and SNAPConnect® device.



Trim-Out In Under 1 Minute

Secure mounting screws and attach wallplate.

Features and Benefits

- SNAPConnect® Eliminates Exposed Live Terminals on the Device



Power Indicating

Most often used to identify emergency circuits, the two LED power indicators identify faces with power and are visible in low light and bright light conditions.



Tamper-Resistant

NEC® Sections 517.31(E) and 517.42(E) and NFPA 99, Health Care Facilities Code, Sections 6.7.2.3.5(B) and 6.7.6.3.2 require receptacles on the Essential Electrical System to be readily identifiable by color or wall plate markings. Also LED power indicators may provide instant, visual assurance that power is available at the receptacle.



Isolated Ground

SNAPConnect® isolated ground devices provide a clean ground path for sensitive equipment. Devices are available with power indication and tamper-resistant.



Surge Protection

SpikeShield® SNAPConnect® surge receptacles provide excellent point of use protection for sensitive electronic loads from everyday power spikes.



USB Charger

SNAPConnect® USB chargers provide power in a standard single gang electrical opening. They are designed to provide maximum charging for portable electronics.

Testers & Connectors

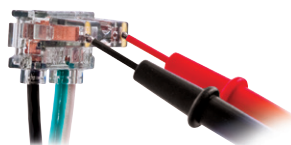


3-in-1 SNAPConnect® Tester

- Tests
 - proper wiring of SNAPConnect® terminals
 - proper wiring of standard receptacles
 - GFCI receptacles

Right Angle Pigtailed Connectors

- Audible SNAP indicates solid connection
 - Secure, easy grip latch
- Inspection of power contacts
 - Clear terminal housing
 - No exposed metal
- Assembled in USA



No Special Tester Required
.085 inch keyhole accepts probe points found on the most common voltage testers and digital multi-meters

SNAPConnect® Tester

Description	Catalog Number
Circuit Tester for SNAPConnect® receptacle terminals, GFCI and standard receptacles	SNAPCTG

SNAPConnect® Right Angle Pigtailed Connectors for Receptacles

Description	Wire Type	Assembled in N. America
6 inch wire connector	Solid	SNAP1RNA
6 inch wire with push-wire terminals		SNAP1RNAM2
6 inch wire connector	Stranded	SNAP2RNA
6 inch wire with push-wire terminals		SNAP2RNAM2
SNAP2RNA with 40 inch leads SNAP2RNA with 100 inch leads		SNAP2RNAM1 SNAP2RNAM3
6 inch wire connector, red (Emergency Circuit)	Solid	SNAP1REM
6 inch wire connector, blue (Surge Circuit)		SNAP1RS
6 inch wire connector, orange (Isolated Ground Circuit)		SNAP1RIG
6 inch wire connector, red (Emergency Circuit)	Stranded	SNAP2REM
6 inch wire connector, blue (Surge Circuit)		SNAP2RS
6 inch wire connector, orange (Isolated Ground Circuit)		SNAP2RIG

SNAPConnect® Right Angle Pigtailed Connectors for Switches

Description	Wire Type	Catalog Number
Switch jumper/tester, single pole, illuminated	—	SNAPSWJUMP
Switch jumper/tester, 3 way, illuminated	—	SNAP3WJUMP
6 inch wire connector for use with	single pole switch	SNAPSP1NA
	single pole switch, wire with push-wire terminals	SNAPSP1NAM2
	single pole pilot light switch	SNAPSPP1NA
	single pole pilot light switch, wire with push-wire terminals	SNAPSPP1NAM2
	3 way pilot light switch	SNAP3W1NA
6 inch wire connector for use with	3 way pilot light switch, wire with push-wire terminals	SNAP3W1NAM2
	single pole switch	SNAPSP2NA
	single pole switch, wire with push-wire terminals	SNAPSP2NAM2
	single pole, pilot light switch	SNAPSPP2NA
	single pole, pilot light switch, wire with push-wire terminals	SNAPSPP2NAM2
6 inch wire connector for use with	3 way pilot light switch	SNAP3W2NA
	3 way pilot light switch, wire with push-wire terminals	SNAP3W2NAM2



SNAPConnect® Devices

Extra Heavy Duty Duplex Receptacles

Features and Benefits

- Available in standard, hospital grade, tamper-resistant and LED power indicating versions
- High strength nylon for extra heavy use applications
- Stainless steel autoground

Applications

- Education
- Hospitality
- Commercial Construction
- Pre-Fab Assembly
- OEM



Codes and Standards



2020 National Electrical Code® and 2021 NFPA 99 Health Care Facilities Code

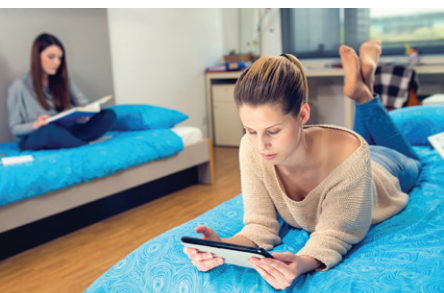
NEC® Sections 517.31(E) and 517.42(E) and NFPA 99, Health Care Facilities Code, Sections 6.7.2.3.5(B) and 6.7.6.3.2 require receptacles on the Essential Electrical System to be readily identifiable by color or wall plate markings. Also LED power indicators may provide instant, visual assurance that power is available at the receptacle.



SNAPConnect® Extra Heavy Duty Duplex Receptacles

Description	Style	Color	15A 125V	20A 125V
Standard	Duplex	Ivory	SNAP5262INA	SNAP5362INA
		Light Almond	SNAP5262LANA	SNAP5362LANA
		White	SNAP5262WNA	SNAP5362WNA
Standard with Finder Groove	Decorator	Ivory	SNAP2152IA	SNAP2162IA
		Light Almond	SNAP2152LAA	SNAP2162LAA
		White	SNAP2152WA	SNAP2162WA
Tamper-Resistant	Duplex	Ivory	SNAP5262ITRA	SNAP5362ITRA
		Light Almond	SNAP5262LATRA	SNAP5362LATRA
		White	SNAP5262WTRA	SNAP5362WTRA
	Decorator	Ivory	SNAP2152ITRA	SNAP2162ITRA
		Light Almond	SNAP2152LATRA	SNAP2162LATRA
		White	SNAP2152WTRA	SNAP2162WTRA
Tamper-Resistant with Split Circuit	Duplex	Ivory	SNAP5262ISCTRA	SNAP5362ISCTRA
		Light Almond	SNAP5262LASCTRA	SNAP5362LASCTRA
		White	SNAP5262WSCTRA	SNAP5362WSCTRA
	Decorator	Ivory	SNAP2152ISCTRA	SNAP2162ISCTRA
		Light Almond	SNAP2152LASCTRA	SNAP2162LASCTRA
		White	SNAP2152WSCTRA	SNAP2162WSCTRA
Standard with Power Indicating LED	Duplex	Ivory	SNAP5262IL	SNAP5362IL
		Light Almond	SNAP5262LAL	SNAP5362LAL
		White	SNAP5262WL	SNAP5362WL
	Decorator	Ivory	SNAP2152IL	SNAP2162IL
		Light Almond	SNAP2152LAL	SNAP2162LAL
		White	SNAP2152WL	SNAP2162WL
Tamper-Resistant with Power Indicating LED	Duplex	Ivory	SNAP5262ILTRA	SNAP5362ILTRA
		Light Almond	SNAP5262LALTRA	SNAP5362LALTRA
		White	SNAP5262WLTRA	SNAP5362WLTRA
	Decorator	Ivory	SNAP2152ILTRA	SNAP2162ILTRA
		Light Almond	SNAP2152LALTRA	SNAP2162LALTRA
		White	SNAP2152WLTRA	SNAP2162WLTRA

Connectors sold separately, see page 3 for details. | For Assembled in USA options, contact your Hubbell sales representative.



National Electrical Code and NEC are registered trademarks of National Fire Protection Association, Inc.



Hospital Grade Extra Heavy Duty Duplex Receptacles



Features and Benefits

- Available in standard, hospital grade, tamper-resistant and LED power indicating versions
- High strength nylon for extra heavy use applications
- Stainless steel autoground

Applications

- Hospitals
- Healthcare Facilities
- Pre-Fab Assembly
- OEM

Codes and Standards



2020 National Electrical Code® and 2021 NFPA 99 Health Care Facilities Code

SNAPConnect® Hospital Grade TR receptacles can be installed in compliance with NEC® Section 517.18(C) and NFPA 99, Health Care Facilities Code, Section 6.3.2.2.1(D) requiring receptacles located within patient rooms, bathrooms, playrooms, activity rooms of designated pediatric locations, other than infant nurseries, to be listed and identified as tamper-resistant.

SNAPConnect® Hospital Grade Extra Heavy Duty Duplex Receptacles

Description	Style	Color	15A 125V	20A 125V
Standard	Duplex	Ivory	SNAP8200INA	SNAP8300INA
		Light Almond	SNAP8200LANA	SNAP8300LANA
		White	SNAP8200WNA	SNAP8300WNA
Standard with Finder Groove	Decorator	Ivory	SNAP2172IA	SNAP2182IA
		Light Almond	SNAP2172LAA	SNAP2182LAA
		White	SNAP2172WA	SNAP2182WA
Standard with FINDER Groove	Duplex	Ivory	SNAP8200IA	SNAP8300IA
		Light Almond	SNAP8200LAA	SNAP8300LAA
		White	SNAP8200WA	SNAP8300WA
Tamper-Resistant	Duplex	Ivory	SNAP8200ITRA	SNAP8300ITRA
		Light Almond	SNAP8200LATRA	SNAP8300LATRA
		White	SNAP8200WTRA	SNAP8300WTRA
Tamper-Resistant with Split Circuit	Decorator	Ivory	SNAP2172ITRA	SNAP2182ITRA
		Light Almond	SNAP2172LATRA	SNAP2182LATRA
		White	SNAP2172WTRA	SNAP2182WTRA
Standard with Power Indicating LED	Duplex	Ivory	SNAP8200ISCTRA	SNAP8300ISCTRA
		Light Almond	SNAP8200LASCTRA	SNAP8300LASCTRA
		White	SNAP8200WSCTRA	SNAP8300WSCTRA
Standard with Power Indicating LED	Decorator	Ivory	SNAP2172ISCTRA	SNAP2182ISCTRA
		Light Almond	SNAP2172LASCTRA	SNAP2182LASCTRA
		White	SNAP2172WSCTRA	SNAP2182WSCTRA
Standard with Power Indicating LED	Duplex	Ivory	SNAP8200IIL	SNAP8300IIL
		Light Almond	SNAP8200LAL	SNAP8300LAL
		White	SNAP8200WL	SNAP8300WL
Standard with Power Indicating LED	Decorator	Ivory	SNAP2172IIL	SNAP2182IIL
		Light Almond	SNAP2172LAL	SNAP2182LAL
		White	SNAP2172WL	SNAP2182WL
Tamper-Resistant with Power Indicating LED	Duplex	Ivory	SNAP8200ILTRA	SNAP8300ILTRA
		Light Almond	SNAP8200LALTRA	SNAP8300LALTRA
		White	SNAP8200WLTRA	SNAP8300WLTRA
Tamper-Resistant with Power Indicating LED	Decorator	Ivory	SNAP2172ILTRA	SNAP2182ILTRA
		Light Almond	SNAP2172LALTRA	SNAP2182LALTRA
		White	SNAP2172WLTRA	SNAP2182WLTRA
Tamper-Resistant with Power Indicating LED	Duplex	Gray	SNAP8200GLTR	SNAP8300GLTR
		Ivory	SNAP8200ILTR	SNAP8300ILTR
		Red	SNAP8200RLTR	SNAP8300RLTR
Tamper-Resistant with Power Indicating LED	Duplex	White	SNAP8200WLTR	SNAP8300WLTR




Connectors sold separately, see page 3 for details. | For Assembled in USA options, contact your Hubbell sales representative. National Electrical Code and NEC are registered trademarks of National Fire Protection Association, Inc.

SNAPConnect® Devices

Permanently Marked Receptacles

Features and Benefits

- For use with Automatic Receptacle Control (ARC) systems
- Permanent power symbol  and CONTROLLED remains clearly visible after installed
- Control both outlets per device, or just one for 50% controlled applications

Applications


- Education
- Hospitality
- Commercial Construction
- Pre-Fab Assembly
- OEM



Codes and Standards



2020 National Electrical Code®

NEC® Section 406.3(E) requires that all nonlocking, 125 V, 15A and 20A receptacles controlled by an automatic control device or by an automatic energy management system must be marked with the  symbol and the word "CONTROLLED".



ASHRAE Standard 90.1 2019

Standard 90.1 requires that at least 50 percent of all 125V, 15A and 20A receptacles in private offices, open offices and classrooms be controlled by an automatic control device. Controlled receptacles need to be marked to differentiate them from non-controlled receptacles.



California Title 24 Building Energy Efficiency Standards 2019

California Title 24 requires that in all buildings, both controlled and uncontrolled 120V receptacles shall be provided in each private office, open office area, reception lobby, conference room, kitchenette in office spaces and copy room.



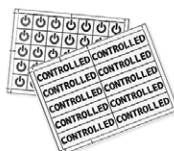
SNAPConnect® Permanently Marked Duplex Receptacles

Description	Color	Standard		Tamper-Resistant	
		15A 125V	20A 125V	15A 125V	20A 125V
Standard One Face Controlled Split Circuit Snap	Ivory	SNAP5262C1I	SNAP5362C1I	SNAP5262C1ITRA	SNAP5362C1ITRA
	Light Almond	SNAP5262C1LA	SNAP5362C1LA	SNAP5262C1LATRA	SNAP5362C1LATRA
	White	SNAP5262C1W	SNAP5362C1W	SNAP5262C1WTRA	SNAP5362C1WTRA
Standard Both Faces Controlled	Ivory	SNAP5262C2I	SNAP5362C2I	SNAP5262C2ITRA	SNAP5362C2ITRA
	Light Almond	SNAP5262C2LA	SNAP5362C2LA	SNAP5262C2LATRA	SNAP5362C2LATRA
	White	SNAP5262C2W	SNAP5362C2W	SNAP5262C2WTRA	SNAP5362C2WTRA
Decorator One Face Controlled Split Circuit Snap	Ivory	SNAP2152C1I	SNAP2162C1I	SNAP2152C1ITRA	SNAP2162C1ITRA
	Light Almond	SNAP2152C1LA	SNAP2162C1LA	SNAP2152C1LATRA	SNAP2162C1LATRA
	White	SNAP2152C1W	SNAP2162C1W	SNAP2152C1WTRA	SNAP2162C1WTRA
Decorator Both Faces Controlled	Ivory	SNAP2152C2I	SNAP2162C2I	SNAP2152C2ITRA	SNAP2162C2ITRA
	Light Almond	SNAP2152C2LA	SNAP2162C2LA	SNAP2152C2LATRA	SNAP2162C2LATRA
	White	SNAP2152C2W	SNAP2162C2W	SNAP2152C2WTRA	SNAP2162C2WTRA

Note: Connectors sold separately, see page 3 for details.
Additional colors available, please see our full line catalog.

Permanent Controlled Receptacle Labels

Description	Catalog Number
For use in retrofit applications where indication of a controlled receptacle is required. This label is UL approved for marking and labeling, 60 labels of each per pack.	CL60



National Electrical Code and NEC are registered trademarks of National Fire Protection Association, Inc. ASHRAE logo is a registered trademark of the American Society of Heating, Refrigeration, and Air-Conditioning Engineers, Inc.



Extra Heavy Duty Single Receptacles



Features and Benefits

- Available in tamper-resistant, standard and hospital grade
- High strength nylon for extra heavy use applications
- Stainless steel autoground

Applications

- Education
- Hospitality
- Commercial Construction
- Pre-Fab Assembly
- OEM

Codes and Standards



2020 National Electrical Code®

SNAPConnect® TR receptacles can be installed in compliance with NEC® Sections 406.12 and 406.4(D)(5) requiring 15A and 20A, 125V and 250V tamper-resistant receptacles in dwelling units; child care facilities; guest rooms and guest suites; preschool and educational facilities; business offices, corridors and waiting rooms of clinics, of medical and dental offices, and of outpatient facilities; waiting areas of airport, train and bus terminals; gymnasiums and skating rinks; auditoriums; dormitory units; and assisted living facilities.

SNAPConnect® Extra Heavy Duty Single Receptacles

Description	Color	15A 125V	20A 125V	15A 250V	20A 250V
Standard	Ivory	SNAP5261I	SNAP5361I	-	-
	Light Almond	SNAP5261LA	SNAP5361LA	-	-
	White	SNAP5261W	SNAP5361W	-	-
Tamper-Resistant	Ivory	SNAP5261ITR	SNAP5361ITR	SNAP5661ITR	SNAP5461ITR
	Light Almond	SNAP5261LATR	SNAP5361LATR	SNAP5661LATR	SNAP5461LATR
	White	SNAP5261WTR	SNAP5361WTR	SNAP5661WTR	SNAP5461WTR

SNAPConnect® Hospital Grade ● Single Receptacles

Description	Color	15A 125V	20A 125V
Standard	Ivory	SNAP8210I	SNAP8310I
	Light Almond	SNAP8210LA	SNAP8310LA
	White	SNAP8210W	SNAP8310W
Tamper-Resistant	Ivory	SNAP8210ITR	SNAP8310ITR
	Light Almond	SNAP8210LATR	SNAP8310LATR
	White	SNAP8210WTR	SNAP8310WTR

Note: Connectors sold separately, see page 3 for details.
Additional colors available, please see our full line catalog.



SNAPConnect® Devices

Ground Fault Receptacles

Features and Benefits

- Heavy duty specification grade
- Shallow box depth creates more room for wiring
- UL Federal Specification WC596
- Tamper-Resistant and Weather Resistant versions meet NEC®
- Flashing red LED ground fault indicator signals end of life

Applications

- Healthcare Facilities
- Education
- Hospitality
- Commercial Construction
- Pre-Fab Assembly
- OEM



Codes and Standards



2020 National Electrical Code®

NEC 2020 517.21 Receptacles located in patient bathrooms and toilet rooms in Category 2 (general care) spaces shall have ground-fault circuit-interrupter protection in accordance with 210.8(B)(1).

NEC 2020 210.8(B) Other Than Dwelling Units. All 125-volt through 250-volt receptacles supplied by single phase branch circuits rated 150-volts or less to ground, 50 amperes or less, and all receptacles supplied by three-phase branch circuits rated 150-volts or less to ground, 100 amperes or less, installed in the locations, 100 amperes or less, installed in the locations specified in 210.8(B)(1) through (B)(12) shall have ground-fault circuit interrupter protection for personnel.

(1) Bathrooms

(2) Kitchens or areas with a sink and permanent provisions for either food preparation or cooking.



SNAPConnect® Heavy Duty Commercial Ground Fault Receptacles

Description	Color	Hospital Grade ●	Specification Grade	
		20A 125V	15A 125V	20A 125V
Tamper-Resistant, Weather Resistant	Gray	SNAPGFC83TWGY	—	SNAPGFC20TWGY
	Ivory	SNAPGFC83TWI	—	SNAPGFC20TWI
	Light Almond	SNAPGFC83TWLA	—	SNAPGFC20TWLA
	Red	SNAPGFC83TWR	—	SNAPGFC20TWR
	White	SNAPGFC83TWW	SNAPGFC15TWW	SNAPGFC20TWW

Connectors sold separately, see page 3 for details.



Surge Protection & Isolated Ground Receptacles



Features and Benefits

- Heavy duty specification grade
- Shallow box depth creates more room for wiring
- UL Federal Specification WC596
- Tamper-Resistant and Weather Resistant versions meet NEC*
- Flashing red LED ground fault indicator signals end of life

Applications

- Healthcare Facilities
- Education
- Hospitality
- Commercial Construction
- Pre-Fab Assembly
- OEM

SNAPConnect® Surge Protection Receptacles

Description	Color	Hospital Grade ●		Specification Grade	
		15A 125V	20A 125V	15A 125V	20A 125V
Tamper-Resistant with Power Indicating LED	Blue	SNAP8262S	SNAP8362S	SNAP5262S	SNAP5362S
	Ivory	SNAP8262IS	SNAP8362IS	SNAP5262IS	SNAP5362IS
	Light Almond	SNAP8262LAS	SNAP8362LAS	SNAP5262LAS	SNAP5362LAS
	White	SNAP8262WS	SNAP8362WS	SNAP5262WS	SNAP5362WS



SNAPConnect® Isolated Ground Receptacles

Description	Color	Style	Hospital Grade ●		Specification Grade	
			15A 125V	20A 125V	15A 125V	20A 125V
Tamper-Resistant	Orange Red	Duplex	SNAP8200IGTRA SNAP8200RIGTRA	SNAP8300IGTRA SNAP8300RIGTRA	SNAP5262IGTRA —	SNAP5362IGTRA —
	Orange Red	Decorator	SNAP2172IGTRA SNAP2172RIGTRA	SNAP2182IGTRA SNAP2182RIGTRA	SNAP2152IGTRA —	SNAP2162IGTRA —
Standard with Power Indicating LED	Orange Red	Duplex	SNAP8200IGL SNAP8200RIGL	SNAP8300IGL SNAP8300RIGL	SNAP5262IGL —	SNAP5362IGL —
	Orange Red	Decorator	SNAP2172IGL SNAP2172RIGL	SNAP2182IGL SNAP2182RIGL	SNAP2152IGL —	SNAP2162IGL —
Tamper-Resistant with Power Indicating LED	Orange Red	Duplex	SNAP8200IGLTRA SNAP8200RIGLTRA	SNAP8300IGLTRA SNAP8300RIGLTRA	SNAP5262IGLTRA —	SNAP5362IGLTRA —
	Orange Red	Decorator	SNAP2172IGLTRA SNAP2172RIGLTRA	SNAP2182IGLTRA SNAP2182RIGLTRA	SNAP2152IGLTRA —	SNAP2162IGLTRA —



Note: Connectors sold separately, see page 3 for details.



SNAPConnect® Devices

USB Charger Duplex Receptacles

Features and Benefits

- Fast charge USB Type-C port designed for more charging speed
- 3A, 5V DC fast charge up to 9V USB
- Charge multiple devices simultaneously
- Green LED indicates USB charging
- Heavy duty stainless steel ports rated for 10,000 cord insertions and removals

Applications

- Universities
- Hotels
- Hospitals/Medical Labs
- Restaurants
- Airports
- Classrooms
- Residential



This outlet is capable of delivering up to 3 Amps, 5V DC of USB power. Charger can increase output from 5 volts to 9 volts, depending on the phone model. If multiple portable devices are plugged in the individual ports will allocate power as determined by the portable devices. Suitable for use on circuits with AFCI and GFCI protection.



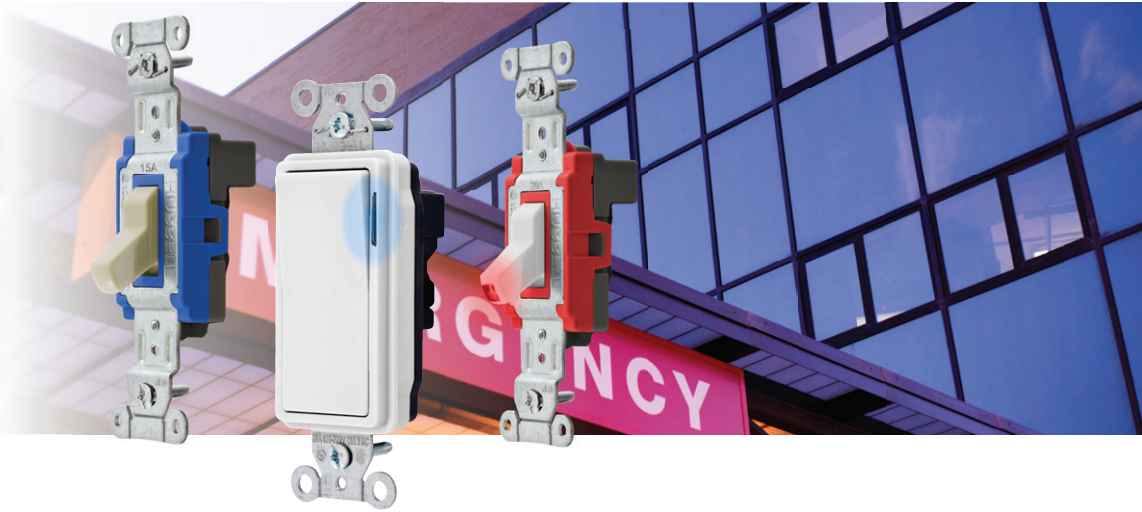
SNAPConnect® USB Charger Duplex Receptacles

Description	Color	Tamper-Resistant	
		15A 125V	20A 125V
Hospital Grade ● USB Charger One USB Type A and one Type-C port, 3 Amp up to 9 Volt USB output	Black	SNAP8200UACBK	SNAP8300UACBK
	Brown	SNAP8200UAC	SNAP8300UAC
	Gray	SNAP8200UACGY	SNAP8300UACGY
	Ivory	SNAP8200UACI	SNAP8300UACI
	Light Almond	SNAP8200UACLA	SNAP8300UACLA
	Red	SNAP8200UACR	SNAP8300UACR
Commercial Grade USB Charger One USB Type A and one Type-C port, 3 Amp up to 9 Volt USB output	White	SNAP8200UACW	SNAP8300UACW
	Black	SNAP15UACBK	SNAP20UACBK
	Brown	SNAP15UAC	SNAP20UAC
	Gray	SNAP15UACGY	SNAP20UACGY
	Ivory	SNAP15UACI	SNAP20UACI
	Light Almond	SNAP15UACLA	SNAP20UACLA
White	SNAP15UACW	SNAP20UACW	

Note: Connectors sold separately, see page 3 for details.



Specification Grade Toggle and Decorator Switches



Features and Benefits

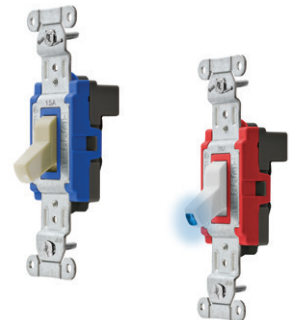
- High strength nylon toggle or thermoplastic rocker for heavy use applications
- Stainless steel autoground
- Incorporates LED technology for illuminated and pilot light

Applications

- Healthcare Facilities
- Education
- Hospitality
- Commercial Construction
- Pre-Fab Assembly

SNAPConnect® Specification Grade Toggle Switches

Description	Color	15A, 120-277V AC		20A, 120-277V AC	
		Single Pole	Three Way	Single Pole	Three Way
Toggle	Ivory	SNAP1201INA	SNAP1203INA	SNAP1221INA	SNAP1223INA
	Light Almond	SNAP1201LANA	SNAP1203LANA	SNAP1221LANA	SNAP1223LANA
	White	SNAP1201WNA	SNAP1203WNA	SNAP1221WNA	SNAP1223WNA
Illuminated blue LED, light ON with load OFF	Ivory	SNAP1201ILINA	SNAP1203ILINA	SNAP1221ILINA	SNAP1223ILINA
	Red	SNAP1201ILRNA	SNAP1203ILRNA	SNAP1221ILRNA	SNAP1223ILRNA
	White	SNAP1201ILWNA	SNAP1203ILWNA	SNAP1221ILWNA	SNAP1223ILWNA
Pilot red LED, light ON with load ON	Ivory	SNAP1201PLINA	—	SNAP1221PLINA	—
	Red	SNAP1201PLRNA	—	SNAP1221PLRNA	—
	White	SNAP1201PLWNA	—	SNAP1221PLWNA	—



SNAPConnect® Specification Grade Decorator Switches

Description	Color	15A, 120-277V AC		20A, 120-277V AC	
		Single Pole	Three Way	Single Pole	Three Way
Rocker	Ivory	SNAP2101INA	SNAP2103INA	SNAP2121INA	SNAP2123INA
	Light Almond	SNAP2101LANA	SNAP2103LANA	SNAP2121LANA	SNAP2123LANA
	White	SNAP2101WNA	SNAP2103WNA	SNAP2121WNA	SNAP2123WNA
Illuminated blue LED, light ON with load OFF	Ivory	SNAP2101ILINA	SNAP2103ILINA	SNAP2121ILINA	SNAP2123ILINA
	Red	SNAP2101ILRNA	SNAP2103ILRNA	SNAP2121ILRNA	SNAP2123ILRNA
	White	SNAP2101ILWNA	SNAP2103ILWNA	SNAP2121ILWNA	SNAP2123ILWNA
Pilot Red LED, light ON with load ON	Ivory	SNAP2101PLINA	—	SNAP2121PLINA	—
	Red	SNAP2101PLRNA	—	SNAP2121PLRNA	—
	White	SNAP2101PLWNA	—	SNAP2121PLWNA	—



Note: Connectors sold separately, see page 3 for details.



SNAPConnect® Devices

Healthcare and Education Product Solutions



Hubbell's in-depth virtual tours are designed to graphically and innovatively demonstrate where and how Hubbell's full line of wiring devices for power, data, voice and multimedia are deployed.

Hubbell Healthcare eTour

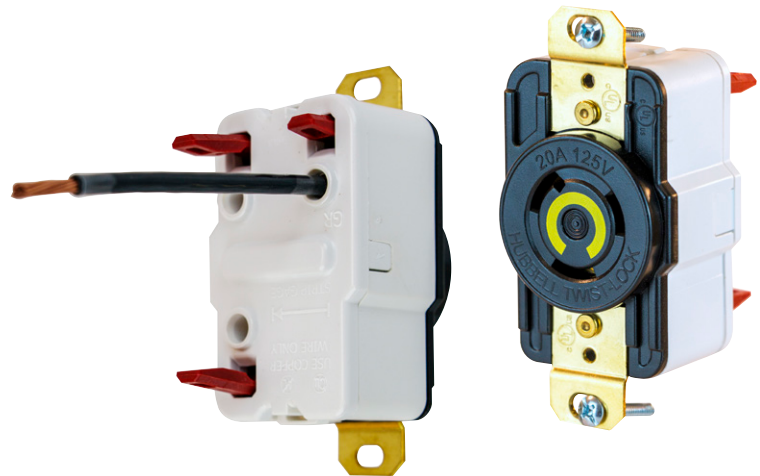
Users can navigate their way through nine specific areas of a virtual hospital. There are 20 unique spaces where Hubbell product solutions are identified at work.

Twist-Lock® Edge Series

Hubbell's innovative Twist-Lock® Edge Series receptacles with screwless terminations are the fastest devices to terminate on the market.

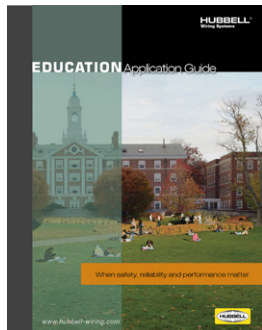
Features

- Strong spring continues to apply pressure as strands relax
- No exposed metal on receptacles, allowing more devices to be installed closer together
- No torque screwdrivers required for wiring



Available Literature

Hubbell offers an extensive literature library for product support. Downloadable PDFs are available on line.



Education Application Guide



Healthcare Application Guide



Installation Efficiency Guide



Entertainment Product Solution Guide



Twist-Lock® Edge Series